



**Hope in Action:** The Campaign for

 **Neighborhood  
House**





# A Resilient Future Begins Here

A few years from now, a resilient and courageous family of six will arrive in St. Paul. Like so many families in our community, newcomers and long-time residents alike. They will face challenging barriers: systemic inequities, food insecurity, unstable housing, limited access to education, unemployment, and language barriers.

But they will find Neighborhood House.

And their lives will begin to change.

Thanks to the **Hope in Action Comprehensive Campaign**, Neighborhood House is positioned to meet this family with the support they need and when they need it. Now well into our five-year campaign, we've made meaningful progress, but reaching our full vision requires continued partnership. We've already expanded services, launched our Integrated Programming Center in the West 7th Street Corridor, and deepened our impact across the community. With your help, we can go even further. Families are counting on us!

We are updating the Paul and Sheila Wellstone Center to ensure our facilities match the quality of our programs. We are evaluating outcomes and refining services, ensuring we can respond swiftly and effectively to our families' evolving needs. And through it all, we remain rooted in our 125-year legacy of neighbors helping neighbors.

In today's climate, where shifting political and economic conditions often leave families more vulnerable, the strength of our local community is more important than ever. That's why your support matters.

At Neighborhood House, hope is not just a feeling, it's action. It's a welcoming Food Market where the whole family is greeted with dignity. It's a Family Coach who helps them navigate housing, employment, and school enrollment. It's a free pre-school for their youngest, after-school tutoring and summer programs for their children, GED and English classes for the parents, and career-specific training that opens doors to new possibilities.

**Hope in Action** means no one must navigate these challenges alone. It means we walk alongside every family, for as long as it takes.

We are honored to partner with families on their journey, and we invite you to walk with us. Your support is not just a donation. It's an investment in real lives, right here in our shared community.

# Campaign Overview

With over 125 years of experience providing social service programs, Neighborhood House understands that progress is a process. It is in that spirit that the Hope in Action campaign originated - utilizing a strategic and targeted plan within a Board-approved framework, focusing on elevating Neighborhood House at all service locations and at all levels of the organization.

It is a process that is already underway and will be completed over the span of five years, providing Neighborhood House a path to securing our future, evaluating our programs, and investing in the communities we serve.



## Securing our Future

---

We believe that a strong foundation is essential for lasting change. That's why we're making strategic investments to ensure Neighborhood House remains a beacon of support for generations to come.

- We are reimagining and reconfiguring the Paul and Sheila Wellstone Center, creating more flexible, community-centered spaces and optimizing our program delivery for greater efficiency and impact.
- We are expanding legacy giving and increasing annual support, ensuring that our 125-year tradition of service continues to grow and meeting families where they are, today and tomorrow.

## Learning, Improving, and Evolving

---

We are committed to growth, not just in size, but in effectiveness.

- In partnership with research organizations and community members, we are conducting a deep review of our programs and services to better understand what works, where we can improve, and how we can innovate.
- We are streamlining our intake process so that individuals and families are connected more quickly and effectively to the wraparound support they need. Every step forward should be one that matters.

## Expanding Our Impact

---

The need is growing—and so is our response. We are expanding our reach to meet more families with compassion, opportunity, and respect.

- Our new Integrated Programming Center in the West 7th community is more than a building—it's a hub of hope, learning, and connection.
- We are designing larger, more inclusive spaces that foster dialogue, engage neighbors in shared solutions, and elevate voices too often left out.
- For adult learners, we are expanding classroom capacity, upgrading technology, and creating dedicated spaces for career and trade exploration, empowering participants to build their futures.
- For youth, we are developing inclusive, age-spanning programs that reflect the needs of our diverse community—because every child deserves access to growth, creativity, and support.
- We are deepening our commitment to food security, beginning with the opening of a new Food Market at Neighborhood House on Montreal and significant upgrades to the Wellstone Food Market, including expanded refrigeration and enhanced intake spaces. At the same time, we continue to explore innovative approaches like hydroponic gardening and direct food delivery for individuals and families who face barriers to accessing traditional food support. Because everyone deserves access to fresh, healthy food, no matter what their circumstances.

# How Gifts Make an Impact

The campaign will utilize funds across several important priorities that will provide both short- and long-term impact throughout the entire organization. The comprehensive nature of the campaign means that annual gifts, multi-year pledges, and planned gifts through an estate will all be counted in pursuit of putting Hope in Action.



## Capital - \$10.5 million

---

Funds raised for physical transformations at Neighborhood House's current and emerging locations.

## Catalyst Fund - \$3 million

---

Funds raised for one-time costs, new program start-up, and capacity building initiatives. The Catalyst Fund is a targeted fund that will be spent down over time, and will allow Neighborhood House to move forward confidently and quickly while annual supporters will sustain growth long-term.

## Endowment - \$2.5 million

---

Funds raised through current gifts and estate commitments that will increase Neighborhood House's endowment and lessen the future fundraising burden for operations.

## Annual Fund - \$9 million

---

Funds raised to increase funding for annual operations as Neighborhood House continues to expand and enhance programs with the communities we serve.



# Securing Our Future

Neighborhood House's history encompasses over a century of community impact. We have been a beacon of hope for struggling families, providing them both short-term relief and lasting change. As we look ahead to the next century and beyond, we know our families will depend on Neighborhood House to be sustainable and financially stable. We also know that the needs of our families change, and they will need a Neighborhood House that can adapt and integrate services in the ways that are most meaningful to them.

Neighborhood House's future will be secured by transforming the Wellstone Center, significantly increasing our endowment, and enhancing our current program offerings.



**“If you’re struggling right now, as I was some months ago, you can come here and seek resource help and get the help you need and move forward. It’s been very beneficial to me and my family.”**



The Wellstone Center is a 93,000-square-foot facility that has provided an incredible home to Neighborhood House for the past 15 years. It has flourished into a community asset and point of pride for St. Paul's West Side. Our programs and services have evolved, and our neighborhood needs have grown extraordinarily. The way we do our work, the services people seek out, and the reliance on technology have all changed dramatically since the

Wellstone Center was planned and constructed. While the building continues to be a tremendous asset for our community and the organization, to meet evolving needs we must reconfigure spaces to better align with dynamic program needs, improve our technology support systems to meet current and future demands, upgrade internal systems, and improve accessibility. These updates to the Wellstone Center will maximize services for those in need and expand our reach.



# Securing Our Future (continued)

## Wellstone Center Reconfiguration and Upgrade



### Multipurpose Room

This newly redesigned and expanded multipurpose room will provide a larger space for community gathering and Youth programs.

**Literacy Center** The new library will provide a space for our rapidly growing book selection that represents all the identities our young participants might see in themselves.

**Kitchen** The updated teaching kitchen will provide a dignified space to serve after school meals and snacks to our youth participants.

### Youth Discovery Center

This redesigned classroom will provide a space for expanded youth activities and community partnerships.

**In-Kind Donations** The new in-kind donation room will provide a designated space to store, display, and distribute jackets, backpacks, cleaning supplies and other items we receive throughout the year.

## Paul and Sheila Wellstone Center / Neighborhood House

has been in St. Paul for over 125 years, listening to the needs of our participants and community members. With the Hope in Action Campaign we will be able to make their dreams a reality in the Paul and Sheila Wellstone Center.

### PECE (Parent and Early Childhood Education)

The new PECE space will have access to sunlight while also tripling the classroom size.

**Food Market** The new upgrades to the Food Market will include walk-in refrigeration and a fresh produce misting system to provide access to more fresh fruits and vegetables.



# Securing Our Future (continued)

## Wellstone Center Reconfiguration and Upgrade

**Maker Space** A hands-on, creativity driven, skill and talent building lab space for the arts, technology, engineering, science, math and more.

**Recording Studio** A studio space focused on video and sound production technical skills that lead to marketable job experience.

**Media Production** A space designed to create insight into all forms of visual and recorded media and build communication skills.

### Creative Tech Center

A multi-faceted technology space to support activities from coding and software development to job training and esports.

**Creative Arts** From fabric to clay, paint to mix media, this creative space will allow young, old and everyone else to express themselves through art.

**Wood/Metals Shop** A space committed to building marketable trade skills while allowing opportunity for creative expression.



**Interactive Wall** A community driven installation that continually changes to embrace the feelings and activities of the neighborhood.

# Securing Our Future (continued)

## Wellstone Center Reconfiguration and Upgrade

### Significant highlights include:

- Ensure every family has the food they need to remain healthy by renovating the food market to meet SuperShelf standards and to maximize ability to store fresh produce with a walk-in cooler
- Support youth and adults with a maker space that encourages learning, collaboration, and relationship-building while simultaneously giving them an introduction to new career fields
- Upgrade building infrastructure to meet the requirements of rapidly evolving technology
- Provide private and welcoming spaces for families to receive family coaching support that ensure the dignity of each person
- Renovate spaces that allow for community and neighborhood connections and inspire lifelong learning



## Endowment

Increasing the Neighborhood House endowment is pivotal to securing the long-term financial stability of the organization, ensuring our ability to continue providing vital services and programs to families in need. The endowment funds, raised through current gifts and estate commitments, will play an important role in increasing Neighborhood House's overall financial resilience. Neighborhood House aims to lessen the future fundraising burden for operations, freeing up more resources to be devoted to serving families and communities. By investing in the endowment, we are ensuring that Neighborhood House will remain a beacon of hope to families for generations to come.



# Securing Our Future (continued)

## Program Enhancement

The Hope in Action Campaign provides critical catalyst funding that allows Neighborhood House not only to sustain—but to grow—our most effective and trusted programs. In today’s environment, where families are navigating increasingly complex challenges and demand for services continues to rise, investing in program excellence and expansion is more vital than ever.

This campaign strengthens our ability to offer consistently high-quality support in our core service areas, while also scaling existing programs to meet the increased needs of participants. That means more staff, improved training, greater access to materials, and expanded program hours. At the same time, we’re launching new, responsive programming that reflects the evolving realities of the communities we serve.

Through deepened partnerships, enhanced facilities, and a growing, dedicated team, we’re ensuring that every individual who comes through our doors can access a full spectrum of wraparound services, and that no opportunity for growth, stability, or connection is left unmet.



**More specifically, the campaign will allow us to:**

- Provide STREAM education opportunities for youth enabling them to build positive self-identities, confidence in their abilities, and belief in the opportunity to have a positive future.
- Ensure that children from multicultural households are ready for kindergarten and have outstanding early learning opportunities starting at age 2. Our program will continue to follow our unique two generation model that has proven to be effective not only for preschoolers but also for their parents who learn to be their children's first teachers and develop the skills to support their learning, health and readiness for kindergarten.
- Expand family center services beyond crisis work and increase our capacity to provide relationship-based coaching for families. Our services will assist families in securing stable housing, food, and education for improved job prospects in order to meet their basic needs and pursue their dreams.

- Increase partnerships with other organizations to offer more life-skills classes such as parenting, cooking, and financial management.
- Update our technology infrastructure so that we can offer more programming in different ways (virtual and in person) and make interacting with Neighborhood House easy, efficient, convenient, and trauma-free for our participants who often struggle with time pressures, transportation challenges, and post-traumatic stress from past experiences elsewhere.



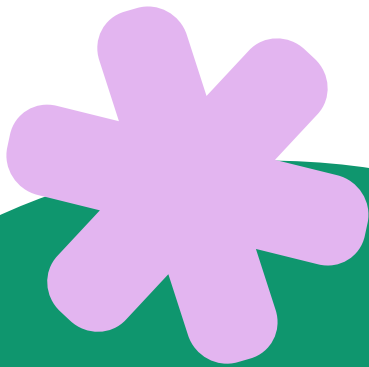
# Evaluating our Successes and Challenges

The complexity of challenges that our families face is immense. Historically, this complexity has made it difficult to consistently assess the impact of our work and gather valuable feedback from the community about how we can continue to meet their evolving needs. Through this campaign, Neighborhood House will build its capacity and expertise, developing evaluation methods that are grounded in community feedback, are data-driven, and help us understand how best to serve our participants with lasting impact.



**The funds from this portion of the campaign will allow us to expand our evaluation team and secure the technology and facilitation resources necessary to get answers to the questions that matter to our community.**

- The evaluation process will allow us to understand issues, identify solutions, and make data-informed decisions to improve our programs and services
- We will work directly with the families we serve to learn what they need from their community, engaging with them long-term
- This invaluable information will inform the expansion plans for new programming and services in the West 7th and Wellstone locations
- Develop continuous improvement plans so we can be responsive to community need and requests
- Invest in a centralized, trauma informed intake system that ensures participants are welcomed with dignity and connected with the right resources quickly and efficiently.



# Expanding Our Impact

In the West 7th Street corridor of St. Paul, Neighborhood House has opened a new, welcoming, and accessible center on Montreal Avenue, bringing all our core services under one roof for the first time in this growing and high-need area. Families who once had to navigate multiple scattered service locations can now access food, education, early childhood programming, and family support in a single, integrated space.

Thanks to the Hope in Action Campaign, this vibrant new 7,500-square-foot facility- secured through a long-term lease- is now fully operational. The Food Market, which opened in June 2024, has already had a significant impact, increasing food distribution in this neighborhood by nearly 50%. Since opening in September 2024, the Family Center has welcomed a growing number of families, Adult Education classes are underway, and our free pre-school is filled with the joy and energy of children learning and playing together.

The response from the community has been overwhelming and affirming. This new center is not just a facility, it's a hub, a Neighborhood House, of connection, care, and opportunity. It reflects our long-term vision for how integrated programming can empower families and strengthen neighborhoods. The Hope in Action Campaign continues to ensure that this new space thrives, and that we are positioned to meet future demand with creativity, compassion, and commitment.

**“As a newcomer, when you don’t know the language and have no friends or family to rely on, what do you do when you’re in crisis? The moment I came to Neighborhood House and met my Case Manager, Frewoine, I felt like I had hope.”**



In our new West 7th facility, now open and bustling with activity, we are delivering the full range of Neighborhood House services in a space intentionally designed to make a deep and immediate impact. Located in a historically underserved part of St. Paul, this center has already become a trusted space where individuals and families can access support, build relationships, and celebrate community. With doors open for food access, education, and family-centered programs, we are expanding opportunities for neighbors to thrive and helping the entire community flourish.

**This transformational space was made possible by the Hope in Action Campaign—an investment in people, place, and potential. And yet, there is more to do.** As demand grows and community needs evolve, continued support will ensure we sustain this momentum, strengthen our programs, and keep meeting families where they are with dignity, compassion, and care.

**Key Highlights of the West 7th Expansion Include:**

- **A large, welcoming Food Market** that offers healthy, nutritious, and culturally specific food—now serving 50% more community members than before—with improved refrigeration, no stairs, and no need to wait outdoors in cold weather.
- **Dedicated spaces for Parent and Early Childhood Education (PECE)** that inspire creativity, support learning, and include access to nature-based outdoor areas—allowing us to offer more class time and enhance outcomes for our youngest participants.
- **A private, welcoming Family Center** that provides dignity and confidentiality for families as they meet with coaches and navigate life’s challenges.
- **Modern, flexible classrooms for youth and adult learners**—equipped for evolving technology needs and adaptable to multiple learning formats.
- **On-site offices for Neighborhood House staff and service partners**, enabling consistency, collaboration, and deeper relationships with families.
- **Dynamic community-building spaces** that foster connection through events, programs, and dialogue—designed to meet both current and future needs with integrated technology.



# Expanding Our Impact (continued)

## Program Expansion: Fueling Growth and Meeting Urgent Needs

The opening of Neighborhood House on Montreal marks a powerful new chapter for Neighborhood House, a fully integrated hub where families can access support, opportunity, and connection under one roof. This vibrant space lays the foundation for growth, innovation, and a deeper level of service.

To build on this promise, Catalyst Funds are more essential than ever. In a time when community needs are growing and traditional resources are increasingly at risk, Catalyst Funds provide the flexible, forward-looking investment necessary to sustain momentum and spark new ideas. These funds will allow us to not only protect what we've built, but to expand upon it. With your support, program expansion through the Hope in Action Campaign will ensure Neighborhood House remains a trusted, evolving, and resilient community anchor, today and for generations to come.



**Specifically, the Program Expansion will allow us to:**

- Launch new programs that directly respond to community-identified needs, informed by evaluation data and participant feedback.
- Strengthen and grow existing services, ensuring we have the staff, infrastructure, and capacity to serve more people more effectively.
- Adapt programming to meet emerging challenges and opportunities, ensuring our work remains culturally relevant, trauma-informed, and equitable.
- Leverage our new West 7th Center as a dynamic foundation for integrated service delivery, where children learn, adults grow, and families heal and thrive together.

With your support, program expansion through the Hope in Action Campaign will ensure Neighborhood House remains a trusted, evolving, and resilient community anchor—today and for generations to come.



# Your Support Puts Hope in Action

For over 125 years, Neighborhood House has stood as a beacon of stability and compassion—powered by the generosity of donors and the unwavering dedication of staff and volunteers. Together, we’ve helped generations of families overcome adversity and build brighter futures.

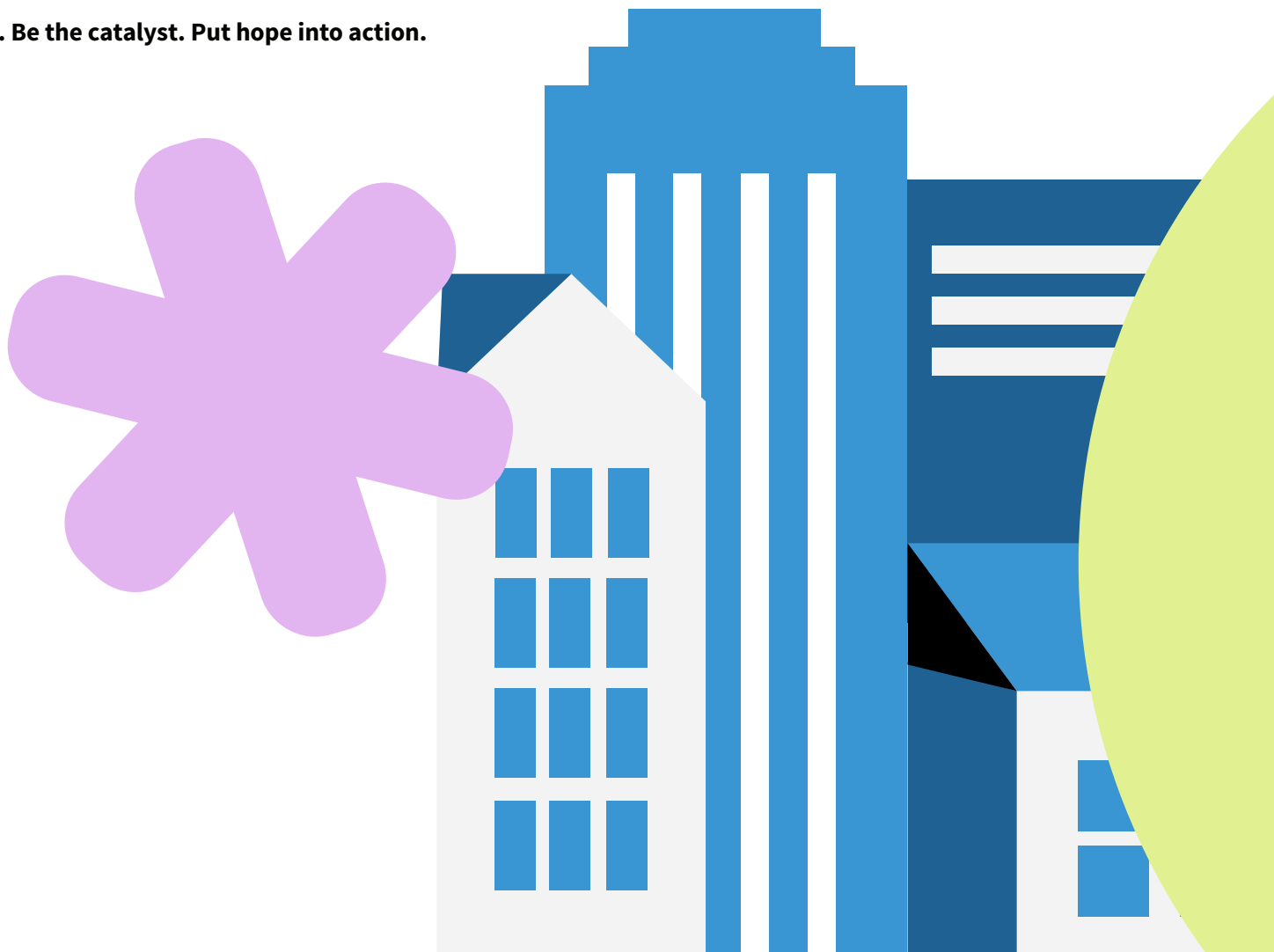
Today, the stakes are higher than ever. Basic human needs, food, housing, education, and dignity are under increasing pressure. Resources are shrinking, but the need is growing. And in times like these, our community turns to one another. **Now more than ever, we must rise as neighbors helping neighbors.**

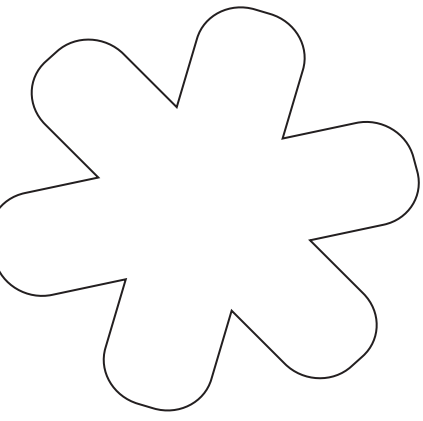
**The Hope in Action** Campaign is our bold response. It is a powerful investment in people, place, and possibility. Your support will:

- Expand access to integrated, life-changing programs for families who need it most
- Ensure our facilities reflect the dignity and care every participant deserves
- Sustain our 125-year legacy through strategic, long-term investments in staffing, programming, and infrastructure
- Strengthening our endowment to protect and grow our impact for future generations

We’ve made incredible progress—but we cannot finish this journey without you.

**Join us. Be the catalyst. Put hope into action.**





**THANK  
YOU!**